

DILWORTH PARK



DILWORTH PARK RENTALS

Broad & Market Streets, West Side of City Hall

Dilworth Park is among the ranks of the city's most desirable venues. This grand, state-of-the-art park promises a new standard for social and celebratory functions and offers the flexibility to accommodate every need. Imagine holding your ceremony adjacent to historic City Hall. Afterward, you and your guests socialize next to a national historic landmark and alongside dancing fountains.

DILWORTH PARK FEATURES



The Fountain

The Fountain at Dilworth is water sculpture set in motion; it streams hundreds of water spouts at random intervals—a lively accent to your festivities. The fountain jets can be custom-programmed at your discretion.

DILWORTH PARK

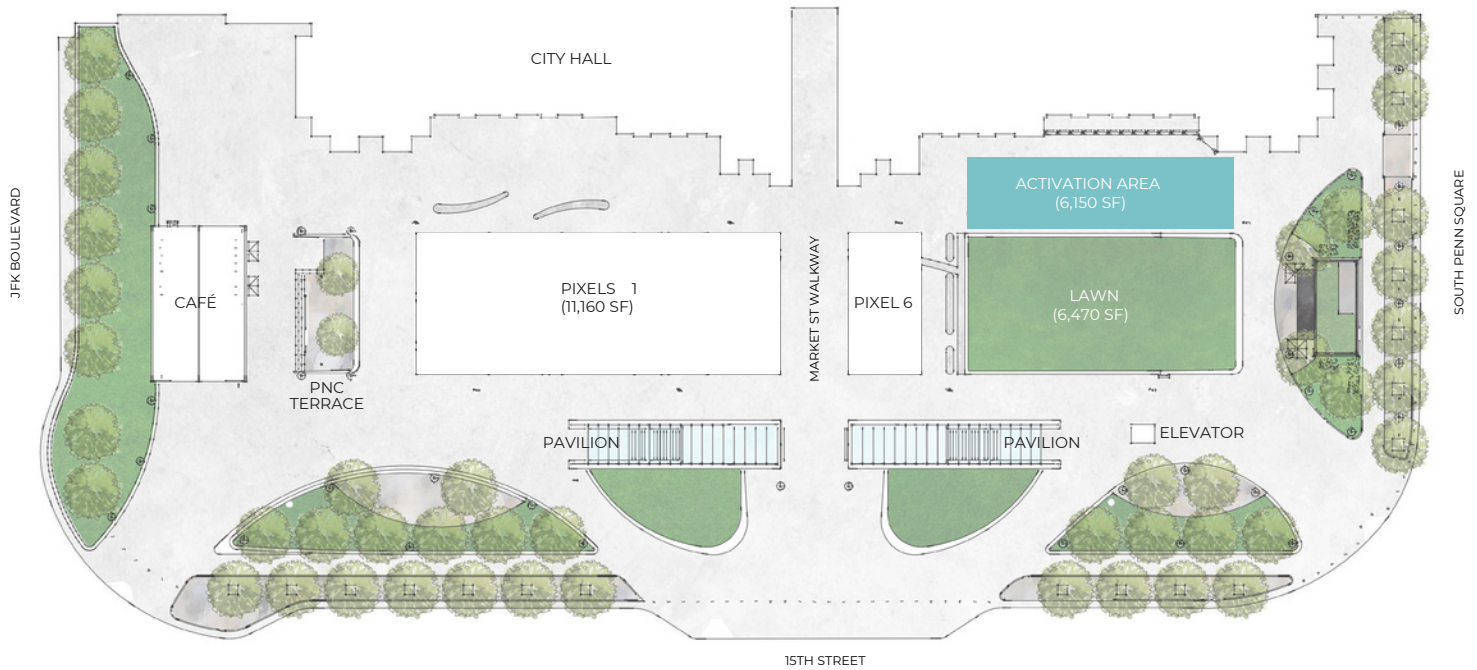
Broad & Market Streets, West Side of City Hall



Within Walking Distance

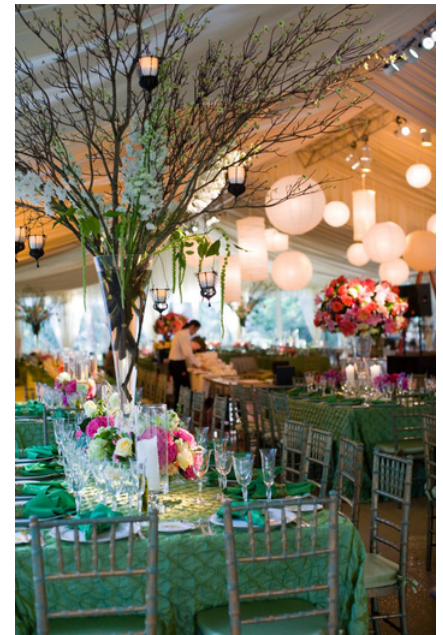
Philadelphia's major office district, the Pennsylvania Convention Center, major hotels, the Avenue of the Arts & the Masonic Temple.

DILWORTH PARK TENT CAPACITIES



AREA	SEATED DINNER	DINNER WITH DANCING/STAGE	THEATER STYLE	RECEPTION/STANDING ROOM ONLY
Lawn	400	300	600	1,300
Pixels 1-5	750	550	1,100	2,250
Pixel 6	120	90	200	350
Market St	100	85	175	340
Walkway All Three	1,500	1,200	2,200	4,500
Spaces + Walkway				

SISTER CITIES PARK RENTALS



SISTER CITIES PARK RENTALS

18th Street and the Benjamin Franklin Parkway

At the midpoint on the Benjamin Franklin Parkway between City Hall and the Philadelphia Museum of Art, Sister Cities Park adds a picturesque swath of green to the heart of Philadelphia's notable arts and cultural district. From here, panoramic views bring skyscrapers, historic cathedrals and museums into harmony, while the Sister Cities fountain, a unique representation of the world with Philadelphia at its center, is close enough for adults to touch and children to run through. The fountain's eleven geyser-like spouts symbolize our eleven sister cities, each positioned according to its global relationship to Philadelphia.

SISTER CITIES PARK

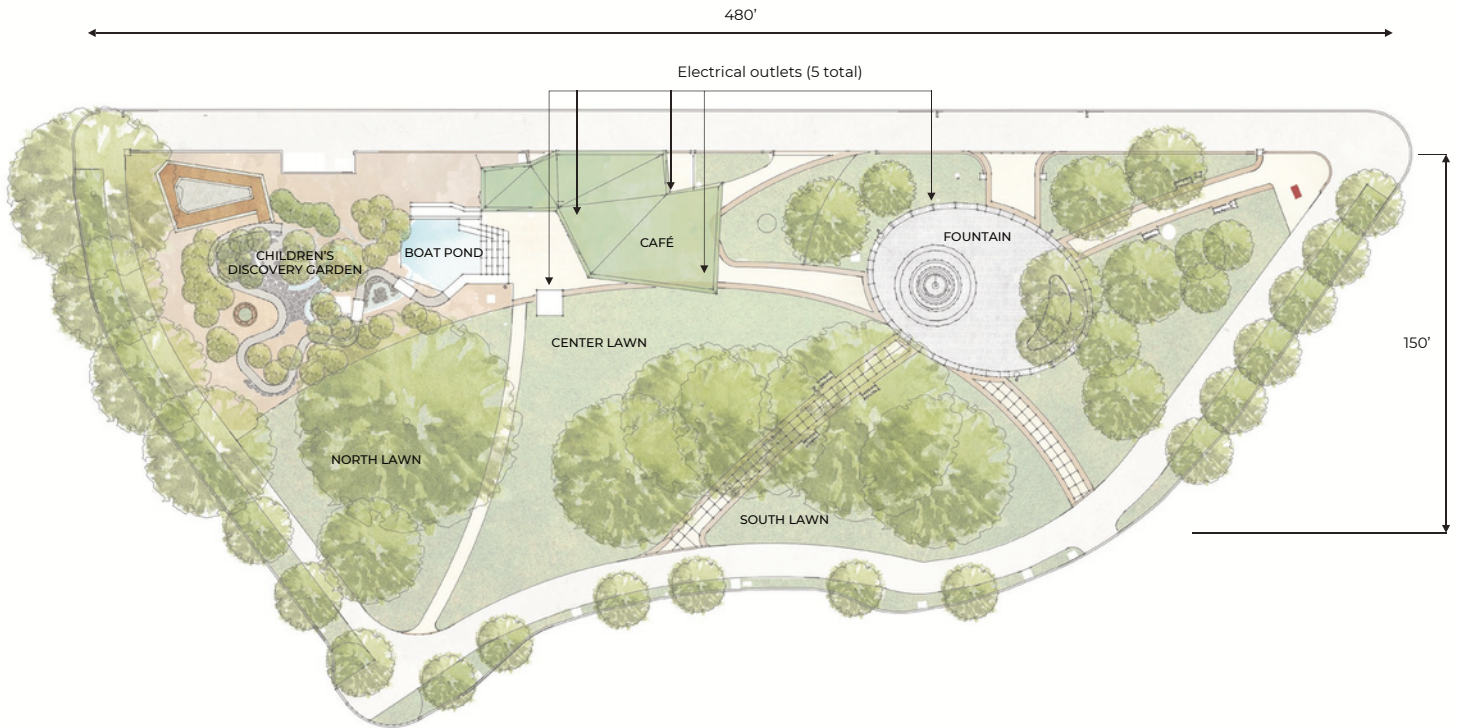
18th Street and the Benjamin Franklin Parkway



Located in Logan Square

Conveniently positioned between the Basilica of Saints Peter and Paul, Swann Fountain and the Logan Hotel, Sister Cities Park is within a short walk of The Four Seasons, the Parkway Museum District and all major downtown office buildings.

SISTER CITIES PARK CAPACITIES



AREA (NO TENTING)	SEATED DINNER	DINNER WITH DANCING/STAGE	THEATER STYLE	RECEPTION/STANDING ROOM ONLY
North Lawn	135	100	200	400
Center Lawn	270	200	500	800
South Lawn & Fountain	270	200	500	800
Discovery Garden	N/A	N/A	N/A	100
Café	30	N/A	50	50
Entire Park	600	500	1000	2000

TENT CAPACITIES

	SIT DOWN DINNER	SIT DOWN DINNER WITH DANCING	THEATRE OR CEREMONY STYLE	RECEPTION
Tent Size	(Tables & Chairs)	(Tables, Chairs, & Dancing)	(Chairs Only)	(Standing Room Only)
20'x30'	30 to 40	24 to 30	50 to 75	50 to 120
20'x60'	60 to 80	48 to 60	100 to 150	100 to 240
30'x30'	45 to 60	36 to 45	75 to 112	75 to 180
40'x60'	120 to 160	96 to 120	200 to 300	200 to 480
40'x75'	150 to 200	120 to 150	250 to 375	250 to 600

JOHN F. COLLINS PARK RENTALS



JOHN F. COLLINS PARK RENTALS

1707 Chestnut Street - Between Chestnut and Ranstead Streets

John F. Collins Park is a hushed, landscaped hideaway tucked within Center City's bustling business district. Adjacent to one of Center City's busiest streets, it can now be a private haven for you and your guests. The entrance from Chestnut Street leads through a wrought iron gateway sculpted with whimsical animal life. Inside, you're transported to a dreamlike garden defined by a sculpture fountain, blossoming flowers and cozy stone benches. This hidden gem is home to elegant cocktail parties, small receptions and intimate wedding ceremonies – making indelible memories along the way.

Jhona Ireland, Event Sales Manager 215.440.5522 or rentals@centercityphila.org

JOHN F. COLLINS PARK

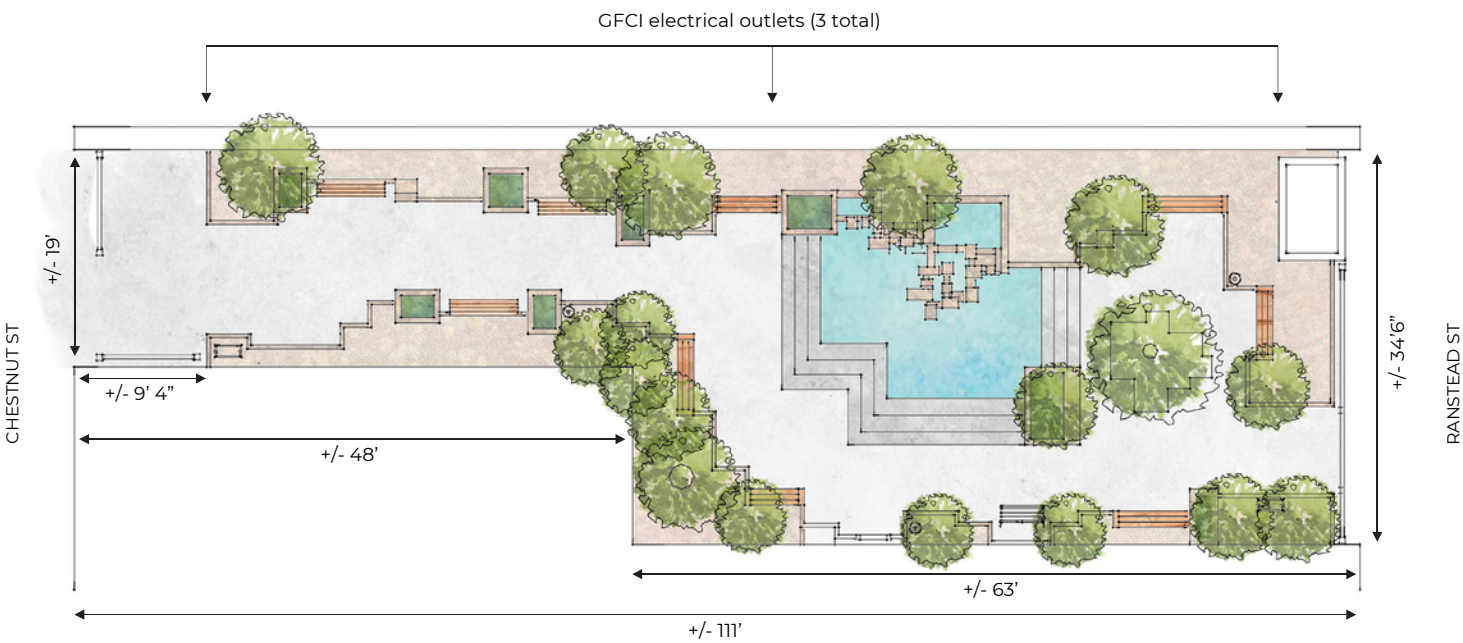
1707 Chestnut Street - Between Chestnut and Ranstead Streets



Within Walking Distance

Westin, Sofitel, Palomar Hotels, all major downtown office buildings, Rittenhouse Row shopping district.

JOHN F. COLLINS PARK CAPACITIES



JOHN F. COLLINS PARK	SEATED DINNER	DINNER WITH DANCING	RECEPTION
Capacities	100	40	100